

## Cylindrical Fuse Links



### ► Applications

Protection against overload and short circuit in electric lines (type gG), also available for protection of semiconductor parts and equipments against short-circuit (type aR) and protection of motors (type aM).

Rated voltage up to 660V; Rated current up to 125A; Working frequency 50Hz AC; Rated breaking capacity up to 100KA. Compliant with GB13539 and IEC269.

### ► Basic Data

The models, dimensions, ratings are shown in Figures 1.1~1.4 and Table 1.

### ► Design Features

Variable cross-section fuse element made from pure metal sealed in cartridge made from high-duty ceramic or epoxy glass. Fuse tube filled with chemically treated high-purity quartz sand as arc-extinguishing medium. Dot-welding of fuse element ends to the caps ensures reliable electric connection; Striker may be attached to the fuse link to provide immediate activation of micro-switch to give various signals or cut the circuit automatically.

Special fuse as per Figure 1.2~1.4 can be supplied according to customers requirements.

Table 1

Cat. No.	Models		Cross-reference		Dimensions/sizes (mm) Fig. $\phi D \times L$	Rated voltage (V)	Rated current (A)	Weight (g)
	MIRO		gG(Normal)	aR(Fast)				
0101	RO06	RS06	-	-	1.1 $\phi 12.7 \times 29$	250/380	1~32	6.5
0102	RO07	RS07	-	-	1.1 $\phi 30 \times 57$	600	10~100	75
0103	RO09	RS09	-	-	1.1 $\phi 18 \times 37$	500	2~63	17.4
0104	RO10	RS10	-	-	1.1 $\phi 18 \times 50$	500	2~63	23.5
0105	RO11	RS11	AJT JKS LPJ	ACL	1.1 $\phi 21 \times 58$	600	2~32	51.5
0106	RO12	RS12	AJT JKS LPJ	ACL	1.1 $\phi 27 \times 60$	600	35~100	90
0107	RO13	RS13	-	-	1.1 $\phi 15 \times 50$	500	2~40	23.2
0108	RO14	RS14	RT19-16 gF1	-	1.1 $\phi 8.5 \times 31.5$	500	0.5~20	4.4
0109	RO14A	RS14A	-	-	1.1 $\phi 8.5 \times 23$	250	0.5~20	3.5
0110	RO14B	RS14B	-	-	1.1 $\phi 8.5 \times 36$	380/500	0.5~20	5.0
0111	RO15	RS15	RT14-20 gF2 RT18-32 RT19-25	KTK KLM	1.1 $\phi 10.3 \times 38$	500/690	0.5~32	7.7
0112	RO15A	RS15A	-	-	1.1 $\phi 10.3 \times 25.8$	250	0.5~16	4.8
0113	RO15B	RS15B	-	-	1.1 $\phi 10.3 \times 31.5$	250/500	0.5~25	5.8
0114	RO15C	RS15C	-	-	1.1 $\phi 10.3 \times 34$	380/500	0.5~32	6.2
0115	RO15D	RS15D	-	-	1.1 $\phi 10.3 \times 57$	600	2~32	11
0116	RO16	RS16	RT14-32 gF3 RT18-63 RT19-40	FWP	1.1 $\phi 14.3 \times 51$	500/690	2~50	20.5
0117	RO16A	RS16A	-	-	1.1 $\phi 14.3 \times 38$	500	2~50	15.6
0118	RO16B	RS16B	-	-	1.1 $\phi 14.3 \times 45$	500	2~50	18.5
0119	RO16C	RS16C	-	-	1.1 $\phi 14.3 \times 67$	500	2~50	27.5
0120	RO17	RS17	RT14-63 gF4 RT18-125 RT19-100	URE2263	1.1 $\phi 22.2 \times 58$	500/690	10~125	58
0121	RO18	RS18	-	-	1.1 $\phi 9.6 \times 30$	380	0.5~25	4.8
0122	RO19	RS19	-	-	1.1 $\phi 20.5 \times 127$	600	0.5~32	91.2
0123	RO19A	RS19A	-	-	1.1 $\phi 20.5 \times 76$	250/500	0.5~63	63
0124	RO19B	RS19B	-	-	1.1 $\phi 20.5 \times 114$	600	0.5~32	85
0125	RO19C	RS19C	-	-	1.1 $\phi 27 \times 139$	600	32~63	172.4
0126	RO19D	RS19D	-	-	1.1 $\phi 27 \times 147$	600	32~63	160
0127	RO54	RS54	-	-	1.1 $\phi 5 \times 20$	250	0.5~16	1
0128	RO55	RS55	-	-	1.1 $\phi 5 \times 25$	250	0.5~16	1.3
0129	RO56	RS56	-	-	1.1 $\phi 6 \times 20$	250	0.5~16	1.7
0130	RO57	RS57	-	-	1.1 $\phi 6.3 \times 25$	250	0.5~16	2.1
0131	RO58	RS58	-	-	1.1 $\phi 6.3 \times 31.5$	250/500	0.5~16	2.5

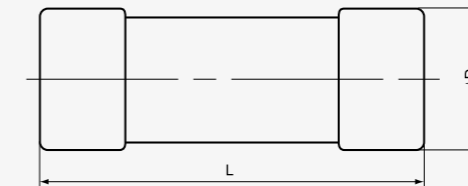


Fig 1.1

Table 1 (Cont.)

Cat. No.	Models		Cross-reference		Dimensions/sizes (mm) Fig. $\phi D \times L$	Rated voltage (V)	Rated current (A)	Weight (g)
	MIRO		gG(Normal)	aR(Fast)				
0132	RO08	RS08	-	JJS	1.2 $\phi 20.5 \times 40$	600	2~63	40

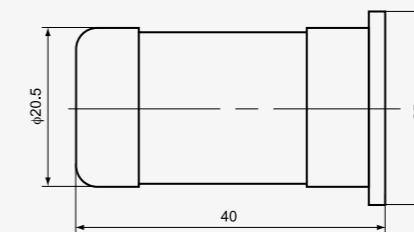


Fig 1.2

